



BYERS GREEN PRIMARY SCHOOL NEWSLETTER

THURSDAY 19 SEPTEMBER 2019

Dear Parents,

On behalf of everyone at our school, I would like to say a special welcome to all children and parents at the start of this new academic year. I hope everyone is looking forward to the busy autumn term ahead.

Please note the following points:

NE FIRST CREDIT UNION

We will continue to take deposits for savings accounts on a Thursday. Anyone wishing to start a savings account for themselves or their children please speak to Mrs Blenkiron for further information.

BOOK CLUB

Book Club now takes place for the children every Friday at 1:00pm. We would like to encourage all the children to save up for a book they have chosen themselves. A suggested amount of 50p per week would allow them to purchase around one book per half term.

EUROPEAN DAY OF LANGUAGES – THURSDAY 26 SEPTEMBER

To celebrate this event each class will take part in European language activities during the day.

HARVEST ASSEMBLY – THURSDAY 3 OCTOBER

This will start at 9:15am. Parents, family and friends are very welcome to join the children for our harvest assembly. For our harvest collection this year we are again supporting the Spennymoor distribution point of the County Durham Foodbank. We would appreciate donations of in date, non-perishable food items particularly any of the following: milk (UHT or powdered), fruit juice (long life), soup, pasta sauces, tinned sponge pudding, tinned tomatoes, tinned vegetables, cereals, tinned rice pudding and jam.

COFFEE AFTERNOON – FRIDAY 25 OCTOBER

Our first coffee afternoon of this year will commence at the usual time of 1:15pm and parents, family and friends are all very welcome. We would be grateful for the donation of any raffle prizes and cakes, biscuits etc. for the refreshment stall. The book club will run throughout the afternoon. The children are able to go home with an authorised adult after this event.

SCHOOL PHOTOGRAPHER – MONDAY 4 NOVEMBER

The photographer will be in school on the above date. Family groups with pre-school children will be photographed from 8:30am on a 'first come, first served' basis. All other individual and family photographs will be taken during the morning session.

CHRISTMAS PANTOMIME - WEDNESDAY 18 DECEMBER

The whole school will be visiting the Gala Theatre to see the annual pantomime on the above date. The price per child will be £15.00. This will include the ticket, transport and a drink. Due to the large amount of tickets reserved, the theatre asks that we pay for them in advance. We would be grateful if the money could be paid into school as soon as possible. Please contact Mrs Blenkiron if you would like to arrange a payment card – we are happy to receive instalments.

SCHOOL START TIME AND BREAKFAST CLUB

Please can I remind you that the school day starts at **8:55am**. Playground supervision by staff begins when the side gate is opened at **8:45am**. If you require childcare before this time, please enquire about our **breakfast club** which runs every day from **8:00-8:45am**.

PARENTAL CONCERNS

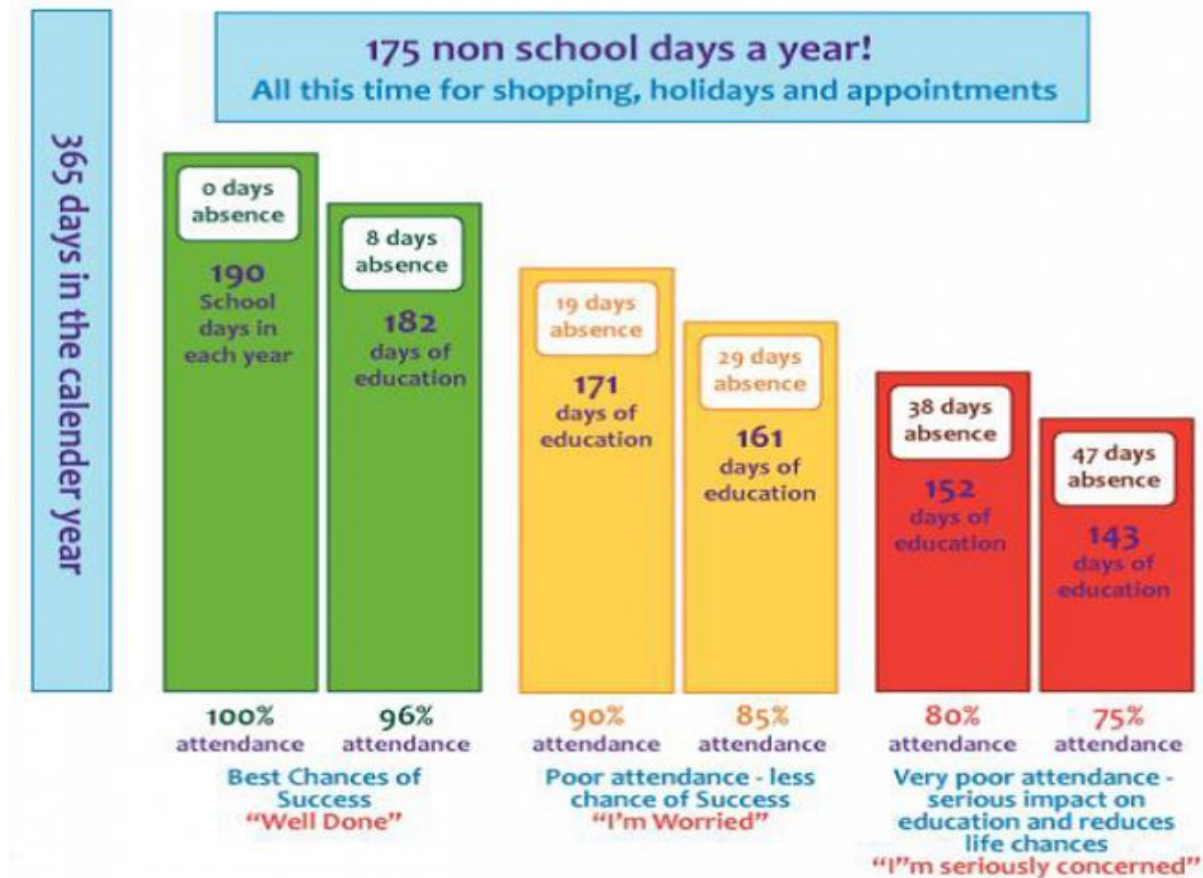
Our teachers make every effort to see parents informally to discuss any concerns as quickly as possible. However, schools are busy places, particularly in the morning, and staff are not always available to see parents immediately. It may be necessary for parents to make an appointment to see the class teacher or the Headteacher at a mutually convenient time. By working together, we hope that most issues will be dealt with at this stage. Formal parent-teacher meetings will be organized after half term and further information will follow nearer the time.

ONLINE SAFETY – CHILDNET

Whether you're puzzled by parental controls or would like to get knowledgeable about gaming, the Childnet website can help. We all know that it can sometimes be challenging to keep up to speed with what children and young people are doing online. On this site you'll find a whole host of useful ways to help keep your child safe: <https://www.childnet.com/parents-and-carers>

ATTENDANCE

Please see the diagram below which emphasises the importance of good school attendance:



I would like to remind everyone that, as of 1 September 2013, the DfE amended the regulations relating to attendance for all schools. References to family holidays and extended leave as well as the statutory threshold of ten school days were removed and it was made clear that Headteachers may not grant any leave of absence during term time unless there are exceptional circumstances. The Local Authority is able to issue penalty notices (fines) to parents who fail to ensure their children's regular attendance at school. A leave of absence form must be completed for all planned absences. If you have any questions about your child's attendance please just ask.

HALF-TERM HOLIDAY

School will close for the half-term holiday on **Friday 25 October 2019 at 3.15pm**. We return on **Monday 4 November 2019**.

Mr W. Kirtley (Headteacher)