



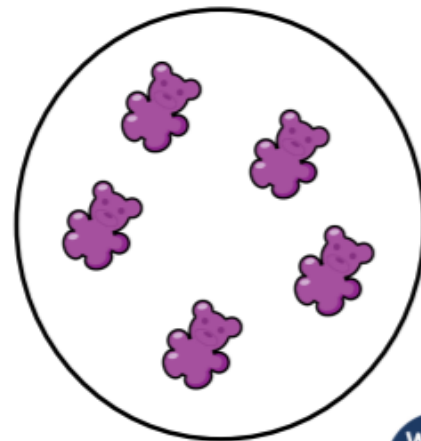
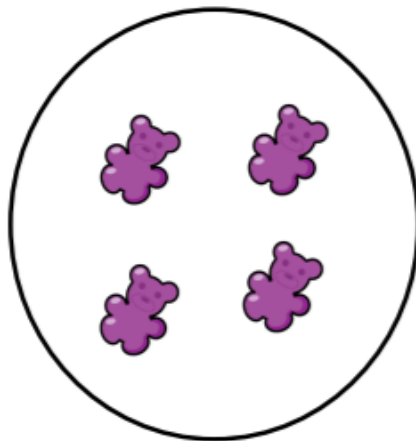
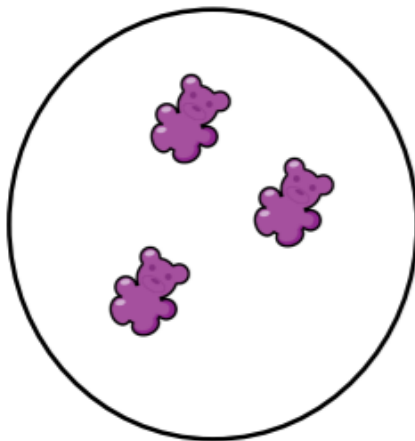
12.1.21

Green –
Make equal groups

True or False ?

Make equal groups

Three more bears need to be added to make the groups equal.

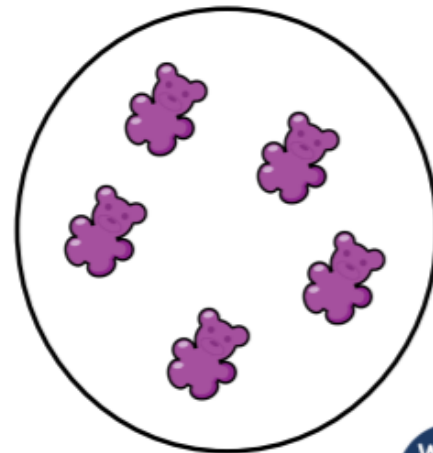
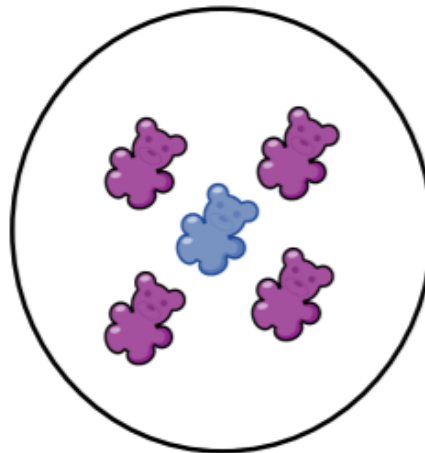
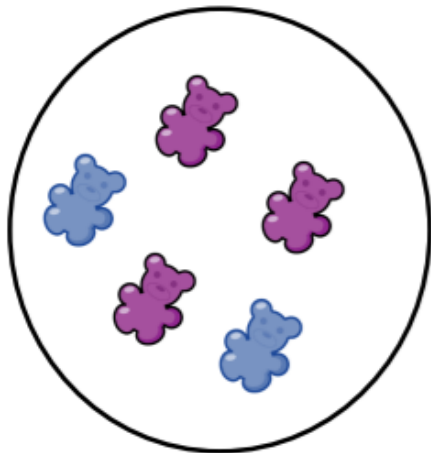


True or False ?

Make equal groups

True

Two bears need to be added to the first group and one bear needs to be added to the second group to make three equal groups of five.



MAKE EQUAL GROUPS



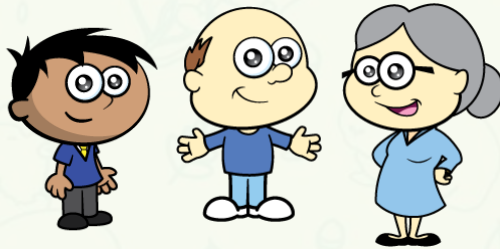
Blue Team



1)



2)

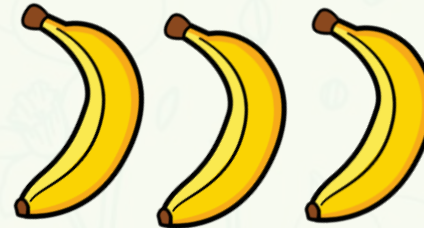
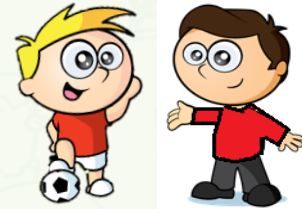


3)



4) $2 + 2 + 2 + 2$

Red Team



$5 + 5$

Blue Team



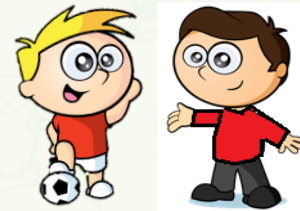
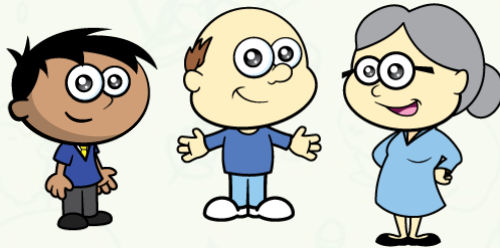
Red Team



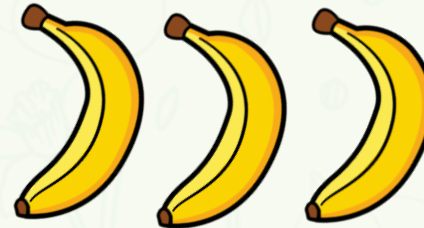
1)



2)



3)



4) $2 + 2 + 2 + 2$



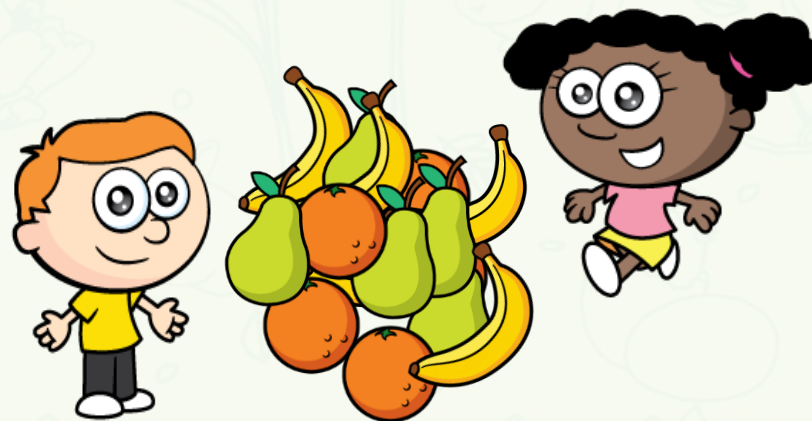
$5 + 5$



Have a think



There are equal groups of



Have a think



There are 5 equal groups of 3

equal groups



3



3



3



3



unequal groups



4



4



5

Have a
think



**Have a go at questions
1 and 2 on the worksheet**



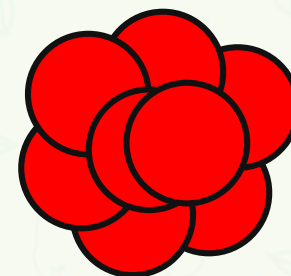
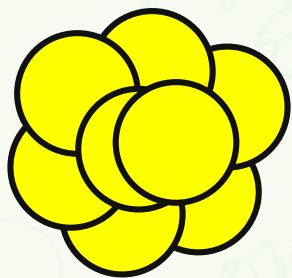
There are 4 equal groups of 3



Have a
think

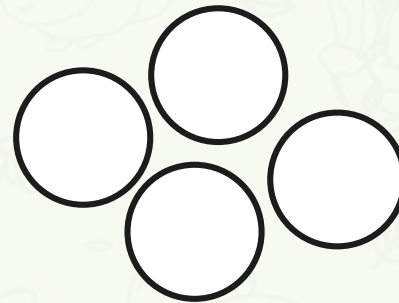
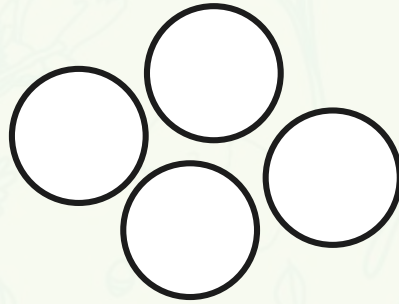
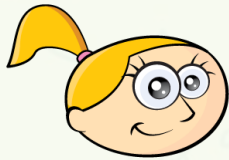


There are 3 equal groups of 4



I have equal groups.

Have a think



There are equal groups of

There are equal groups of

Can you describe how these children
are grouped?



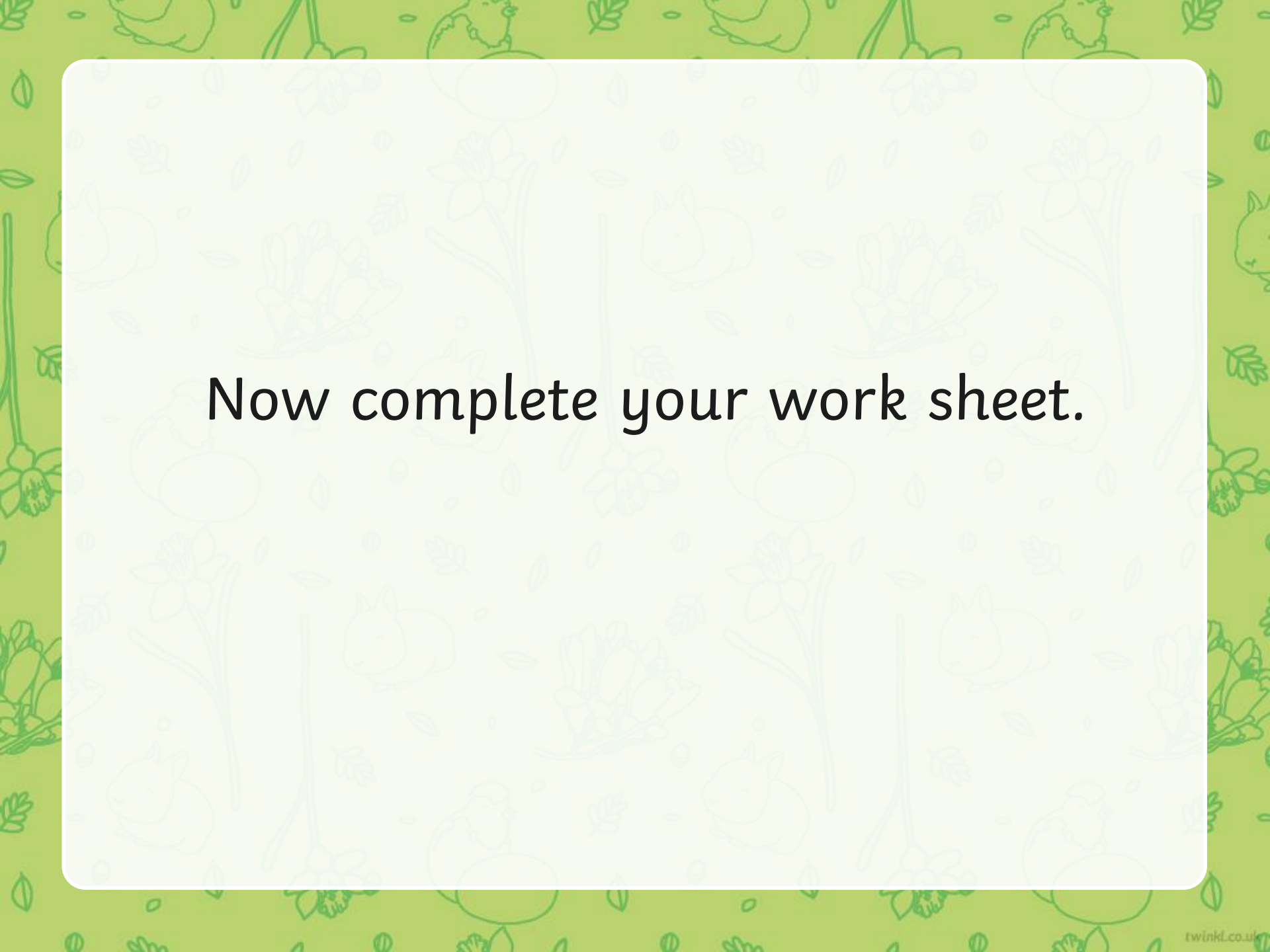
There are 4 equal groups of 3



There are 3 equal groups of 4

Have a think



The background of the slide is a vibrant green with a repeating pattern of white line art. The pattern includes rabbits, tulips, and various leaves. A large, white, rounded rectangular box is centered on the slide, containing the text.

Now complete your work sheet.