

Homophones and Near Homophones



This week, we are going to look at some of the most-commonly misused words in the English language.



School Summer Fete!

Come along on Saturday 23rd for fun and games for all the family!

- Tombola
- Raffle
- Fun Run
- Bouncy Castle
- Bric-a-Brac Stalls

1st

The poster is decorated with a string of colorful bunting at the top. It features five circular icons: a purple one for 'Tombola', a pink one for 'Raffle', a green one for 'Fun Run', a blue one for 'Bouncy Castle', and an orange one for 'Bric-a-Brac Stalls'. An illustration of two children, a girl and a boy, is shown on the left. A yellow ribbon with '1st' is attached to the bottom right of the poster.

What is incorrect here?

Why?



This week, we are going to look at some of the most-commonly misused words in the English language.

School Summer Fate!

Come along on Saturday 23rd for fun and games for all the family!

Tombola Raffle Fun Run


Bouncy Castle

Bric-a-Brac Stalls

1st


Can you write a sentence that uses 'fate' correctly?





Please stand well back from the edge of the platform until the train is completely stationery.

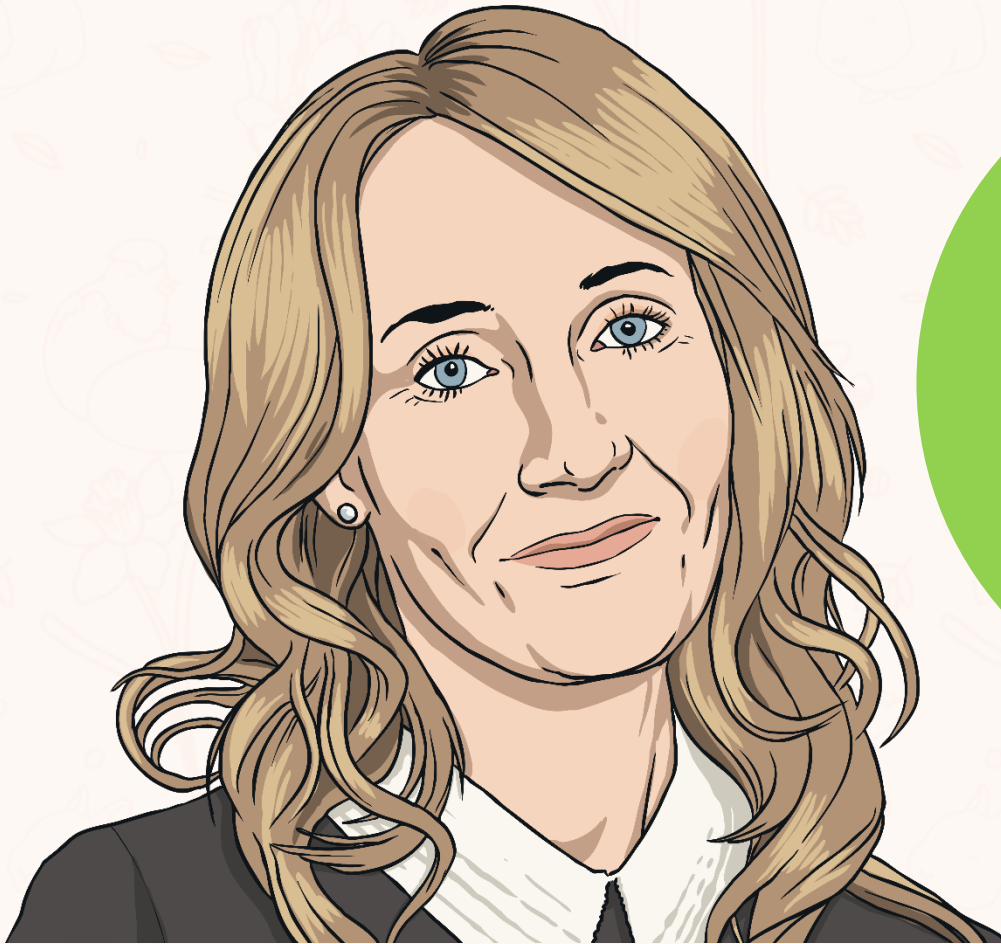
What is incorrect within the announcement? Why?



Please stand well back from the edge of the platform until the train is completely stationery.

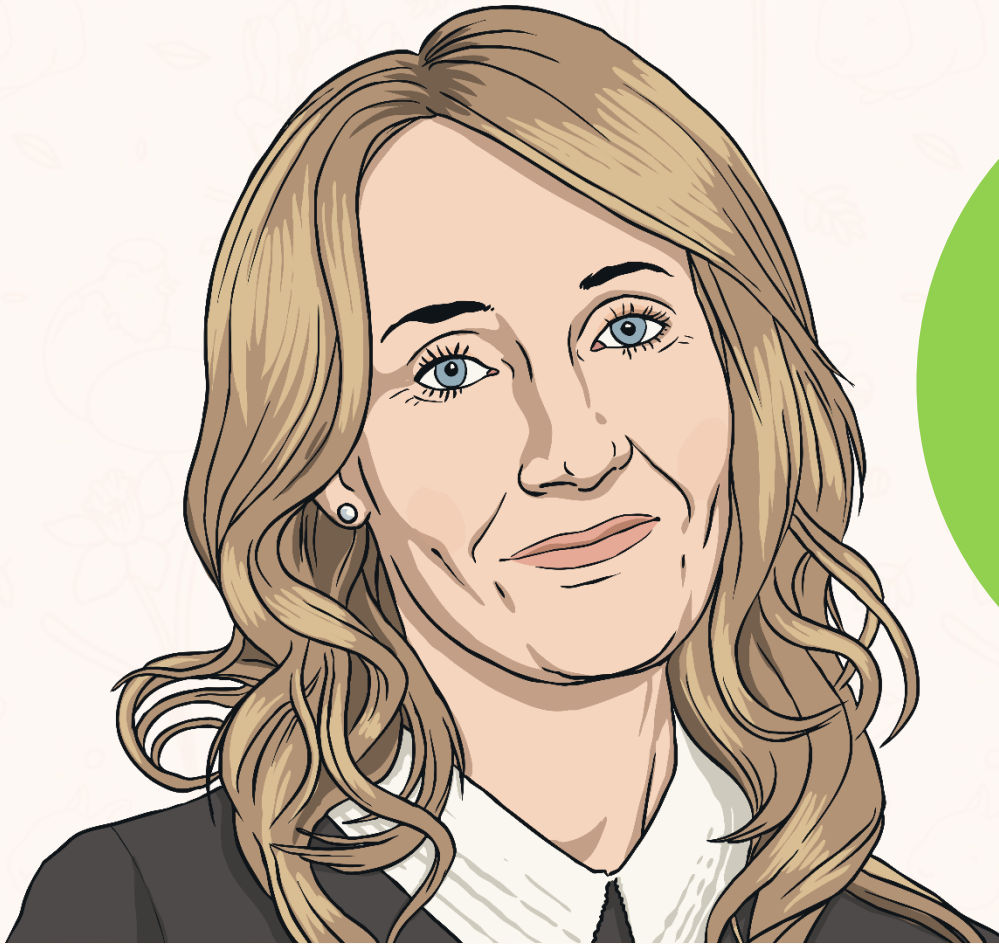
The announcement should have said 'stationary' and not 'stationery'. We can remember the difference as stationEry is to do with envelopes while stationAry is staying in one place as if anchored.

whose or **who's**?



JK Rowling, _____
books have sold
millions of copies
worldwide, does a
lot of fantastic
fundraising work
for charity.

Discuss with your partner...
whose or **who's**?



JK Rowling, whose
books have sold
millions of copies
worldwide, does a
lot of fantastic
fundraising work
for charity.

whose or who's



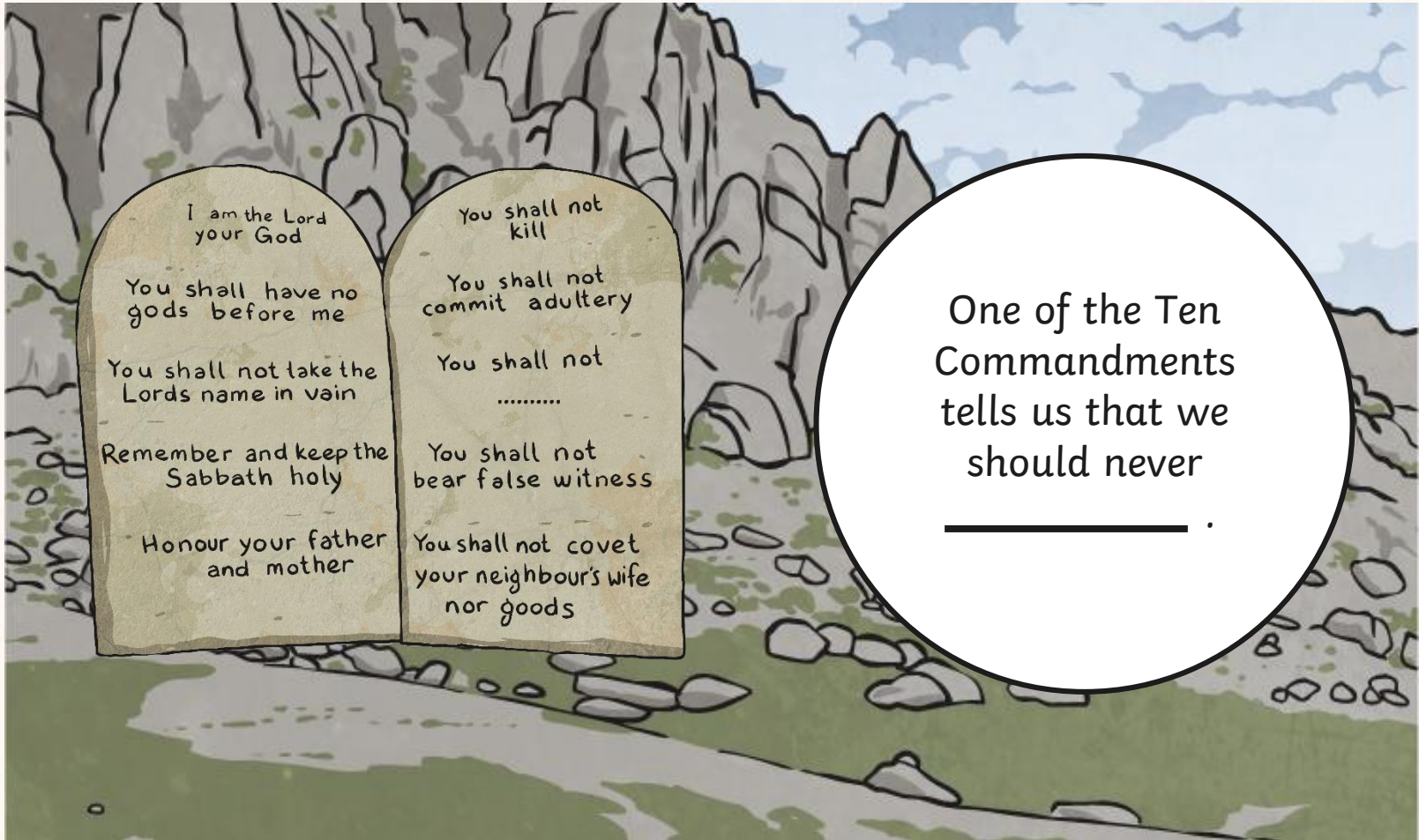
'Whose' is a relative pronoun.

'Who's' is a contracted form of 'who is' or 'who has'.

Can you use 'who's' in a sentence?

Discuss with your partner...

steel or **steal**?



I am the Lord
your God

You shall have no
gods before me

You shall not take the
Lords name in vain

Remember and keep the
Sabbath holy

Honour your father
and mother

You shall not
kill

You shall not
commit adultery

You shall not
.....

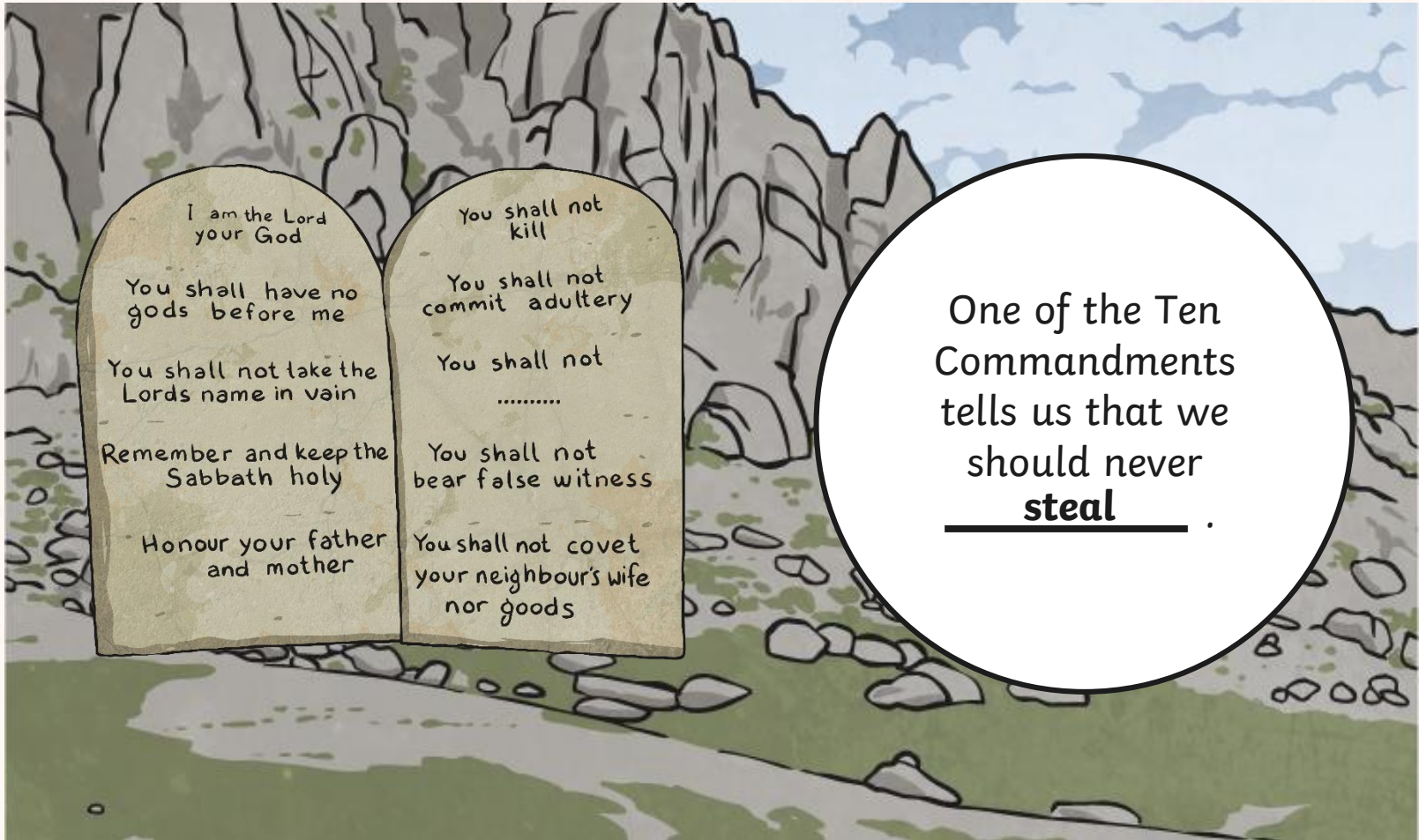
You shall not
bear false witness

You shall not covet
your neighbour's wife
nor goods

One of the Ten
Commandments
tells us that we
should never
_____ .

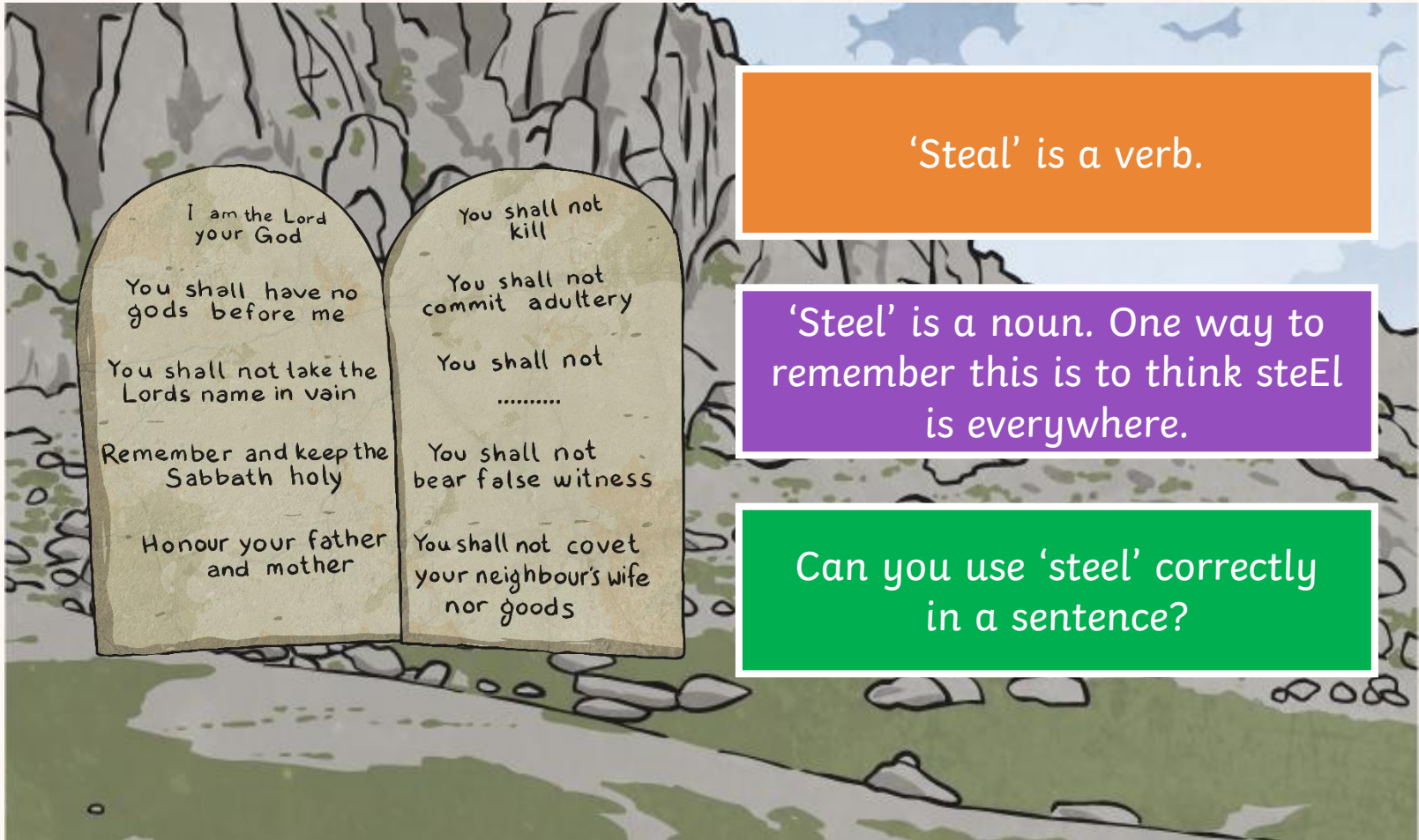
Discuss with your partner...

steel or **steal**?



One of the Ten
Commandments
tells us that we
should never
steal .

steel or steal



'Steal' is a verb.

'Steel' is a noun. One way to remember this is to think steEl is everywhere.

Can you use 'steel' correctly in a sentence?

weary or **wary**?

After the long-distance race, the athlete was feeling **weary** but elated at her win.



weary or wary

'Weary' and 'wary' are near homophones that are both usually used as adjectives.

To remember this you could remember if you are WEArY you might be WEAK.

Can you use 'wary' in a sentence correctly?



Here are your spelling words for this week.

Week 4

Homophones & Near Homophones

stationary

stationery

steal

steel

wary

weary

who's

whose

fate

fete

[twinkl.co.uk](https://www.twinkl.co.uk)

Work hard to
practise the pairs of
homophones and
near homophones.

