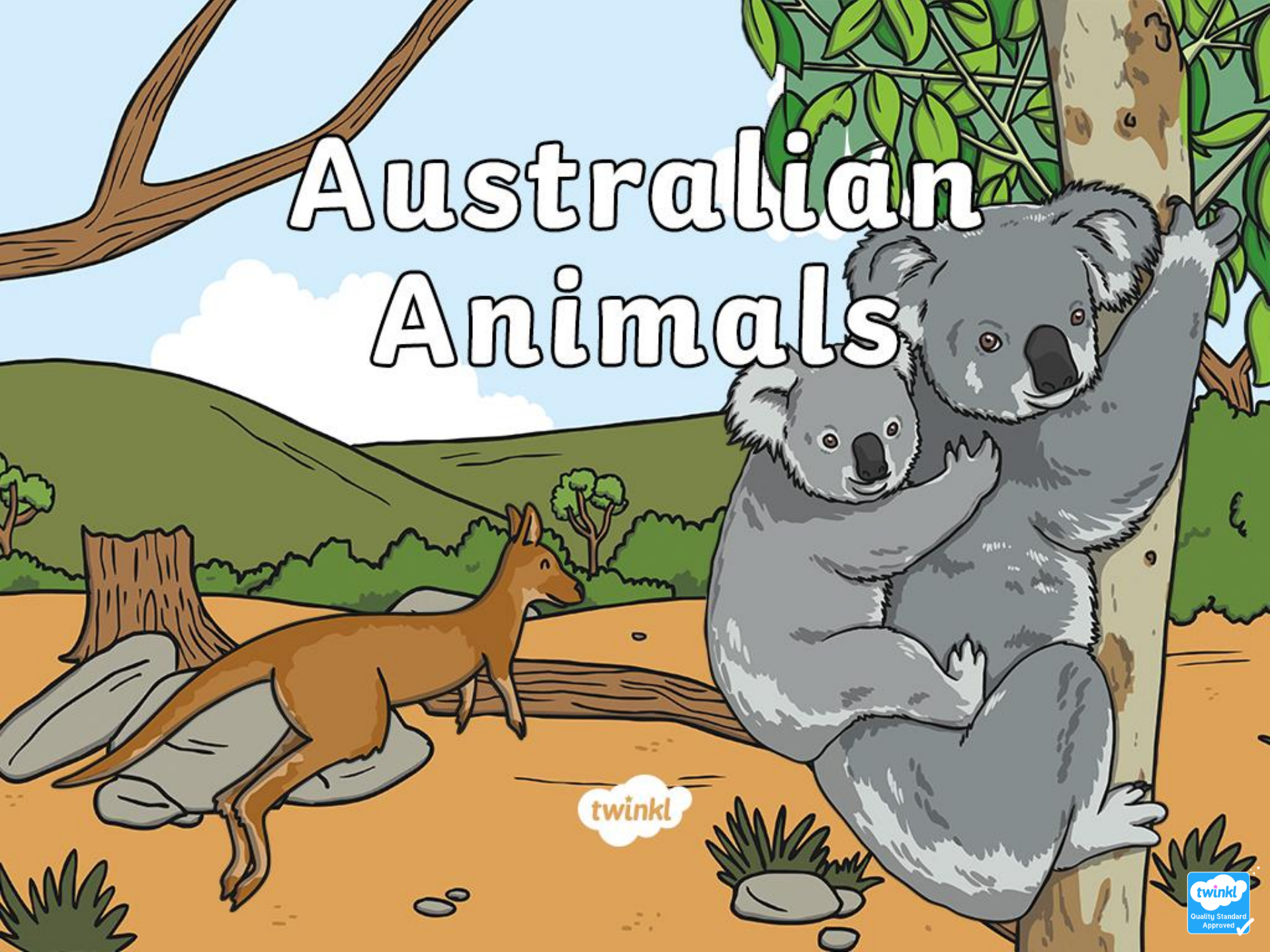


Australian Animals



twinkl

Kangaroo

Kangaroos are mammals and belong to a group called **marsupials**.

This means that the mother carries her young in a pouch.

Kangaroos have large, strong legs with big feet. This makes them great jumpers!

They also have a long tail (to keep them balanced) and a small head.



Kangaroos live in groups called mobs.

They are **herbivores**. This means that they eat plants, leaves and different grasses.

Kangaroo

A baby kangaroo is known as a **joey**.

The red kangaroo is the largest marsupial in the world.



Did You Know?

Kangaroos cannot move backwards.

Echidna

The echidna can be found all over Australia and is the most common Australian mammal.

The echidna looks a bit like a hedgehog with a long, thin snout. It has very sharp spines (along its back and sides) as well as a long tongue, which they flick out to catch insects with.

When an echidna is scared, it curls up into a spiky ball, to protect itself from predators.



Echidna

An echidna eats minibeasts, such as worms and ants. They use their sharp claws to break open rotting logs to collect tiny bugs.



Did You Know?
Echidnas have no teeth.

Emu

The emu is the largest bird in Australia and the second largest bird in the world!

Emus have long necks, sharp beaks and small ears.

They have two sets of eyelids. One set is for blinking and the other is to keep the dust out.



They have three toes on each foot.

One toe on each foot has a long claw- this is used for fighting.

Emu

Emus like to eat grains, flowers, berries, insects and anything else they can find.

Emus can live in flocks or pairs.



Did You Know?
Emus cannot fly.

Wombat

Wombats are only found in the wild in Australia. They are mammals and **marsupials**.

Wombats have short legs, a small head, wide feet and strong claws.

They are great at digging!

They live in underground dens called **burrows**. The burrows are made from roots of fallen trees, soil, leaves and rocks.



Wombat

Wombats can be sandy coloured, brown, black or grey.

Wombats are **nocturnal**, which means they are awake at night and asleep during the day.

They go out at night time to feed on grass and roots.



Did You Know?

A wombat's pouch is backwards.

Koala

Koalas are found in the wild in Australia. Although they are often called 'koala bears', they are not bears. They are actually **marsupials**, like wombats, possums and kangaroos.

A baby koala is called a **joey**.

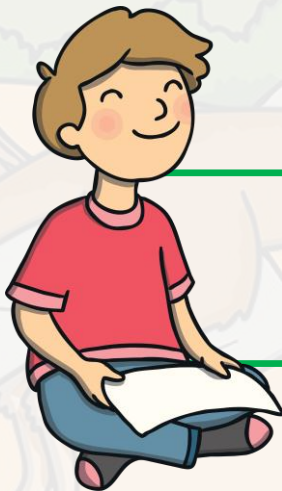
Joeys live in their mother's pouch for about six months.



Koala

Koalas are good at climbing trees. They use the sharp claws on their front paws to hold on to the branches and to grip their food.

They are **herbivores** and their favourite tasty treats are eucalyptus leaves.



Did You Know?

Koalas can sleep for up to 18 hours a day.

Tasmanian Devil

The Wild Tasmanian devil can only be found in the wild in Tasmania. The Tasmanian devil is a **marsupial**.

Tasmanian devils are mostly black, but often have white markings on their chest. Tasmanian devils are **carnivores**, which means they only eat meat. They eat lizards, frogs, insects and any animal meat they can find.



Tasmanian Devil

Tasmanian devils are good at spotting things that are moving, but if things are still they probably won't see it as clearly.



Did You Know?

Tasmanian Devils store fat in their tail and use this when they can't find food.