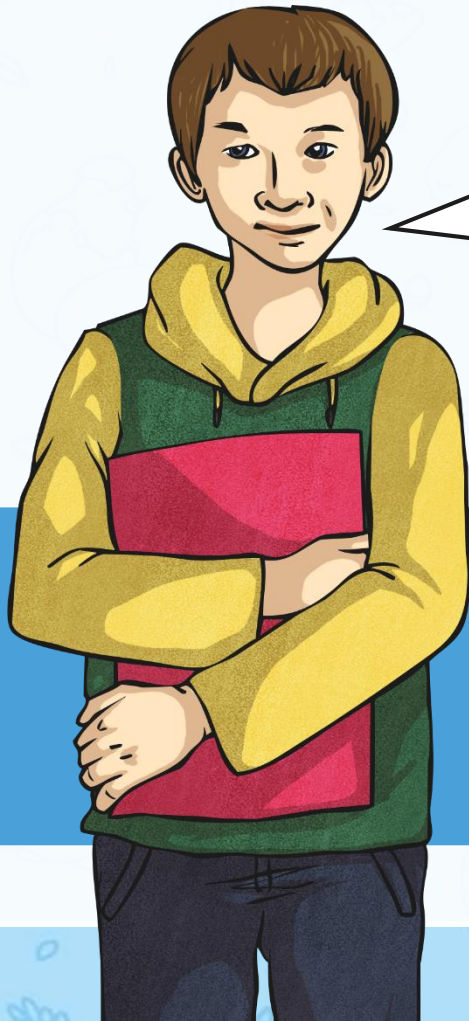


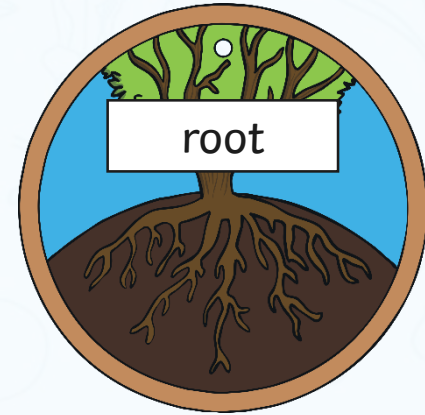
Words That Belong to the Same Word Family



This week, we are looking at spellings that belong to the same family of words.

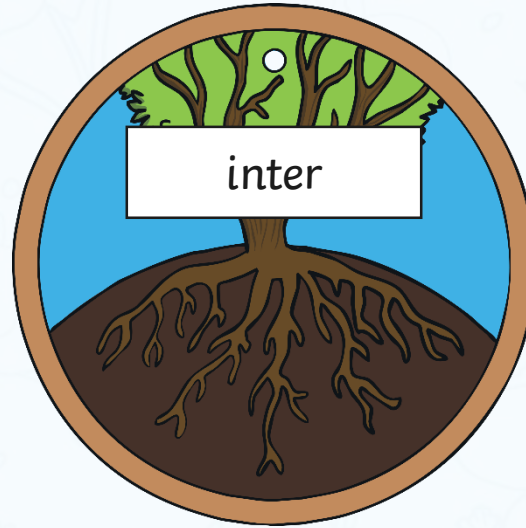
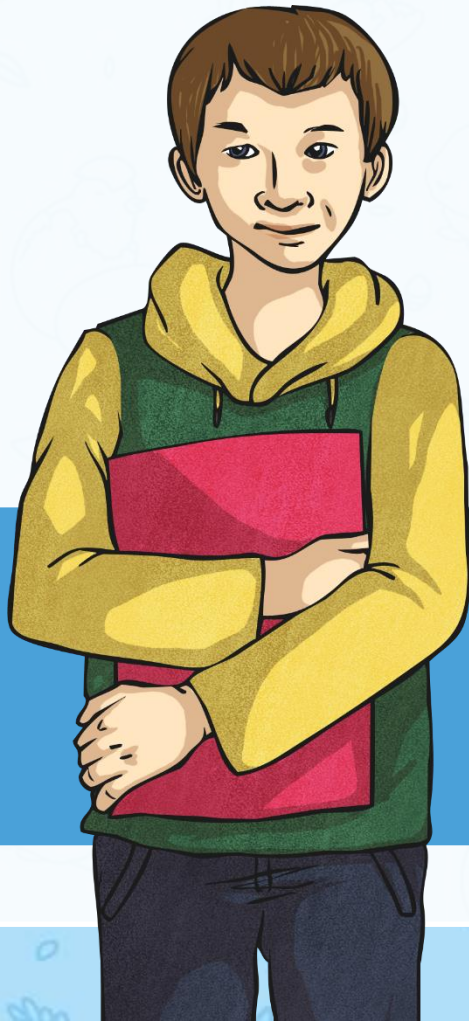


Many words share the same **origin** or root word.



The word 'origin' means where something came from or where it began.

The particular prefix that we are going to look at this week is...



'inter-' comes from Latin and means between, amongst or in the middle of.

Remember, the clues will all lead to inter- prefix words:



To deliberately stop a continuous activity or process.

To get involved in someone else's business.

To obstruct something from reaching its destination.

To twist together.

In the meantime.

Remember, the clues will all lead to inter- prefix words:



interrupt

interfere

intercept

intertwine

interim

Remember, the clues will all lead to inter- prefix words:



Situated within the inside of something.

To scatter among or between things.

An intruder or uninvited guest.

To have a curiosity or excitement in something.

To say something abruptly over the top of another speaker.

Remember, the clues will all lead to inter- prefix words:



internal

intersperse

interloper

interest

interject

Here are your spelling words for this week.



Work hard to practise these inter- word family spellings.

Week 5

Word families based on common words, showing how words are related in form and meaning

interrupt
interfere
intercept
interject
intertwine
interim
internal
intersperse
interloper
interest

[twinkl.co.uk](https://www.twinkl.co.uk)